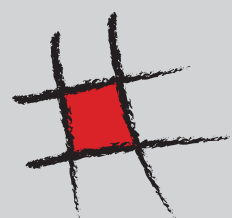
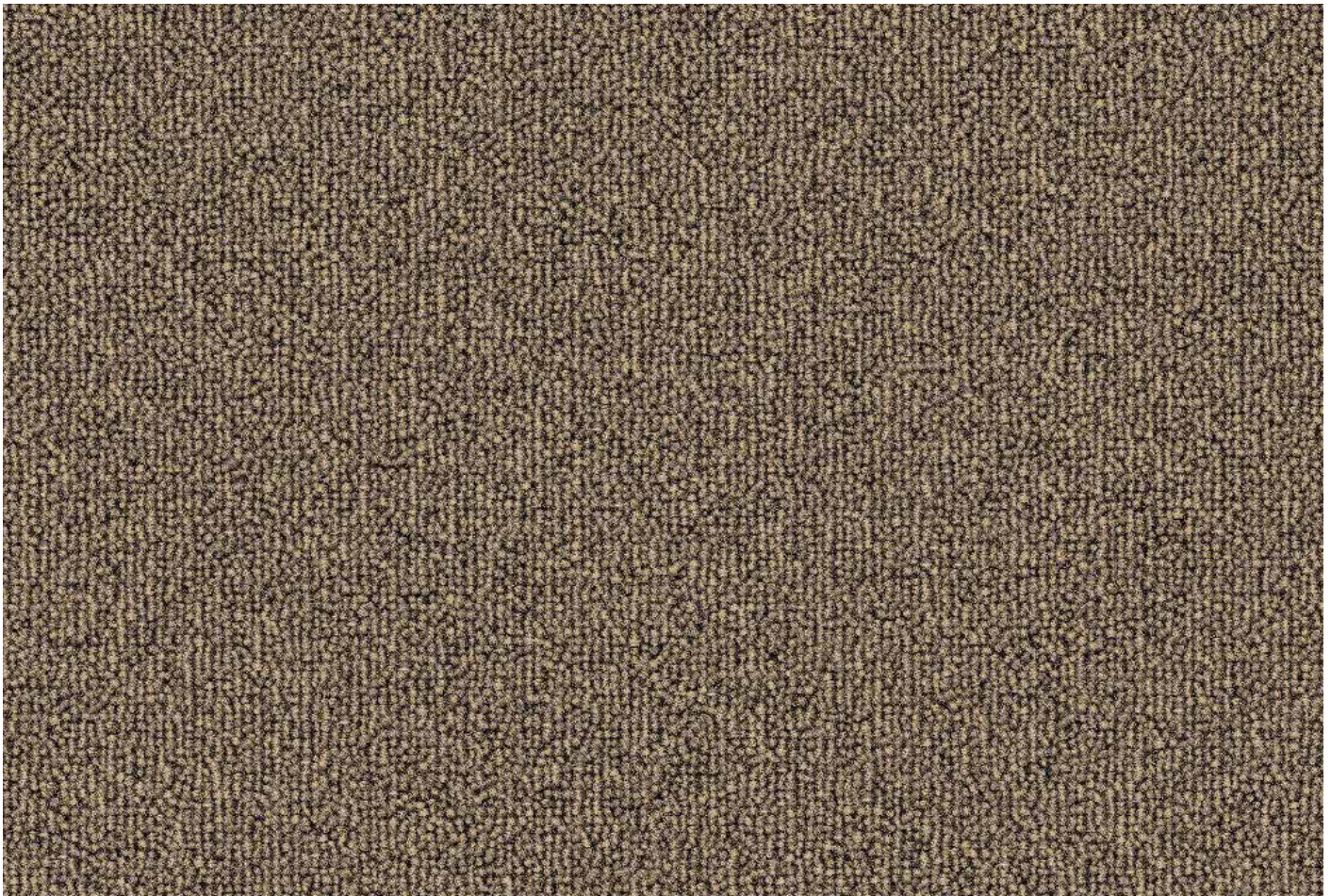


# *City* Carpet Tile

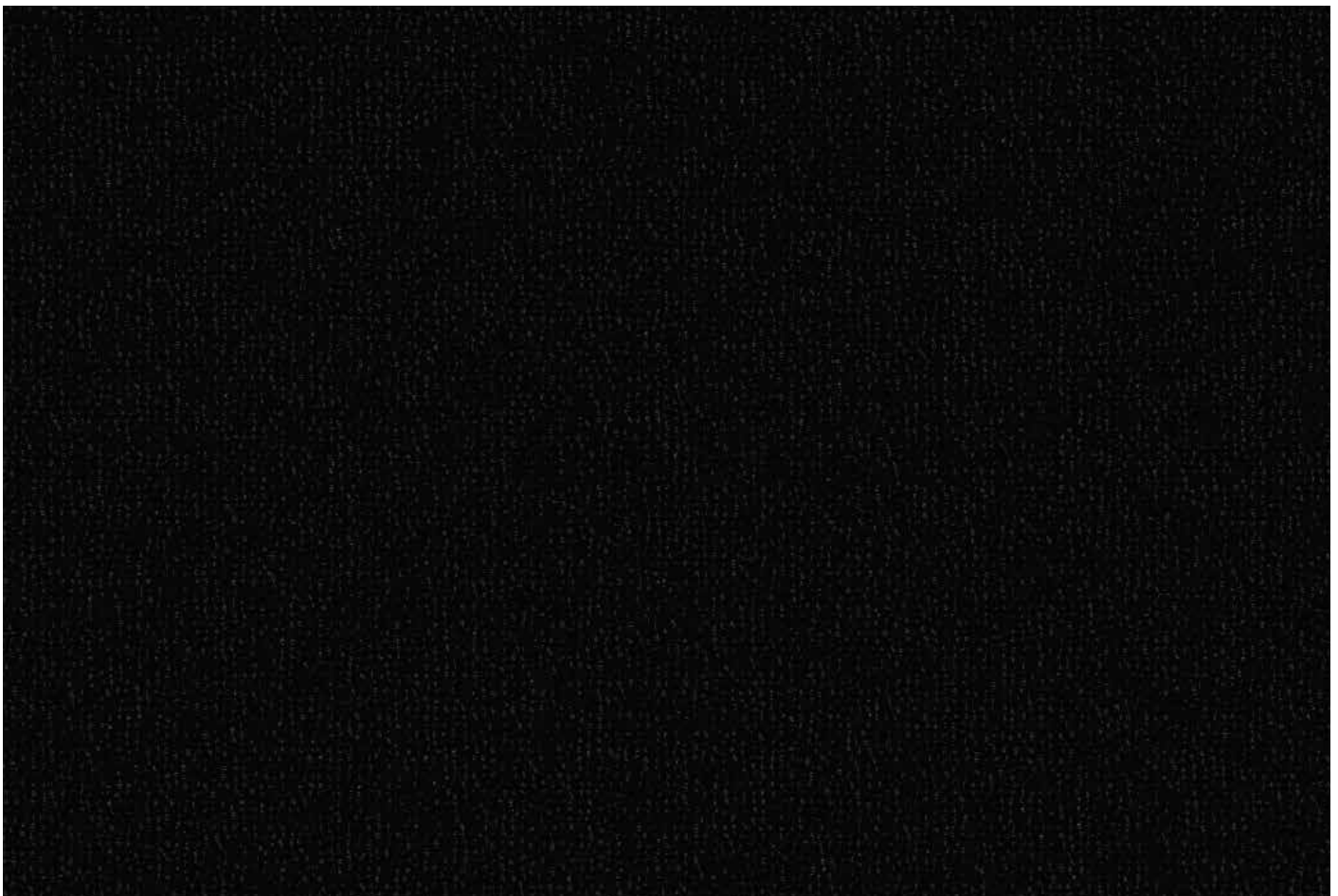


*Plain Carpet Tiles 50 x 50cm*





Fawn Beige CT242



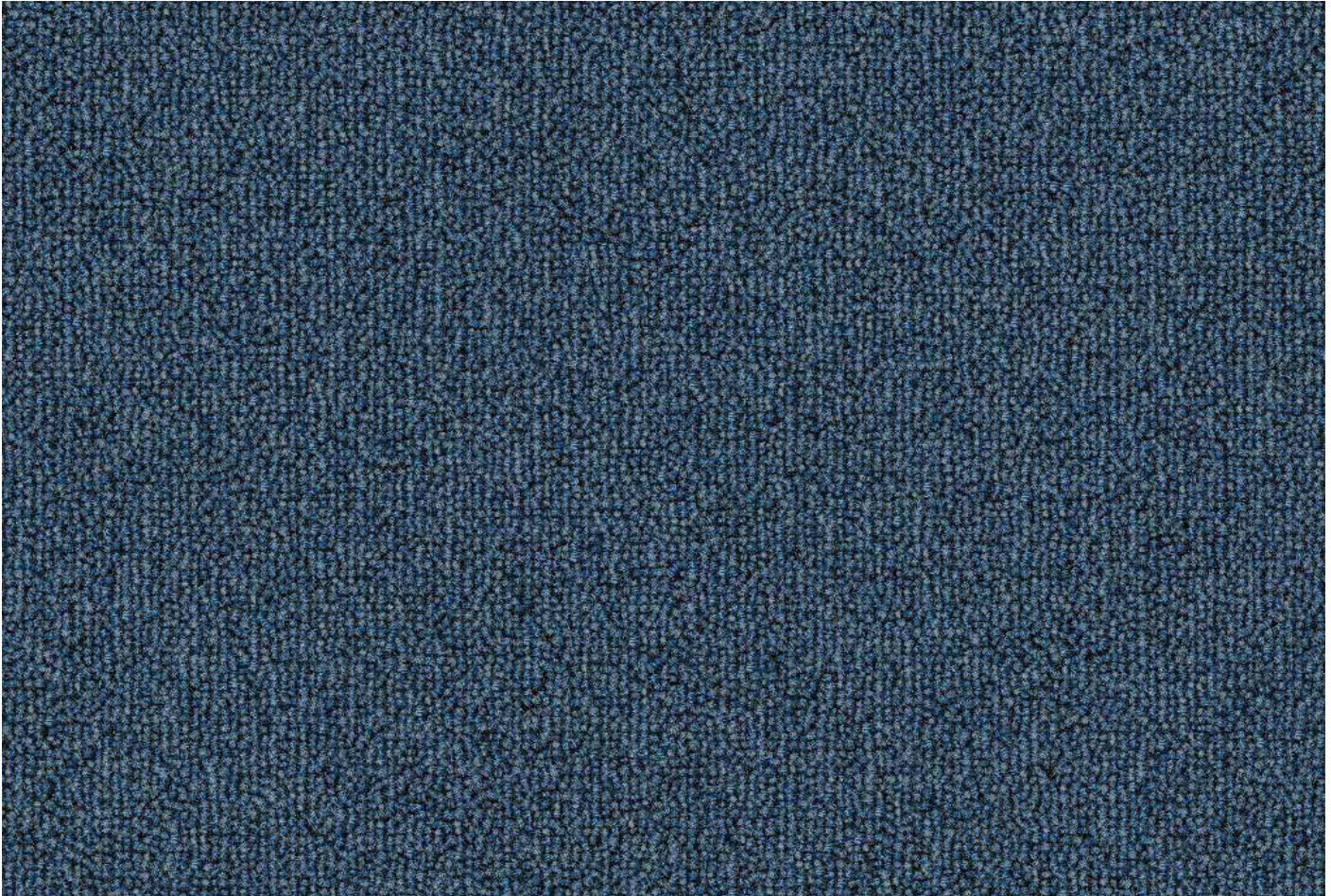
Black CT45



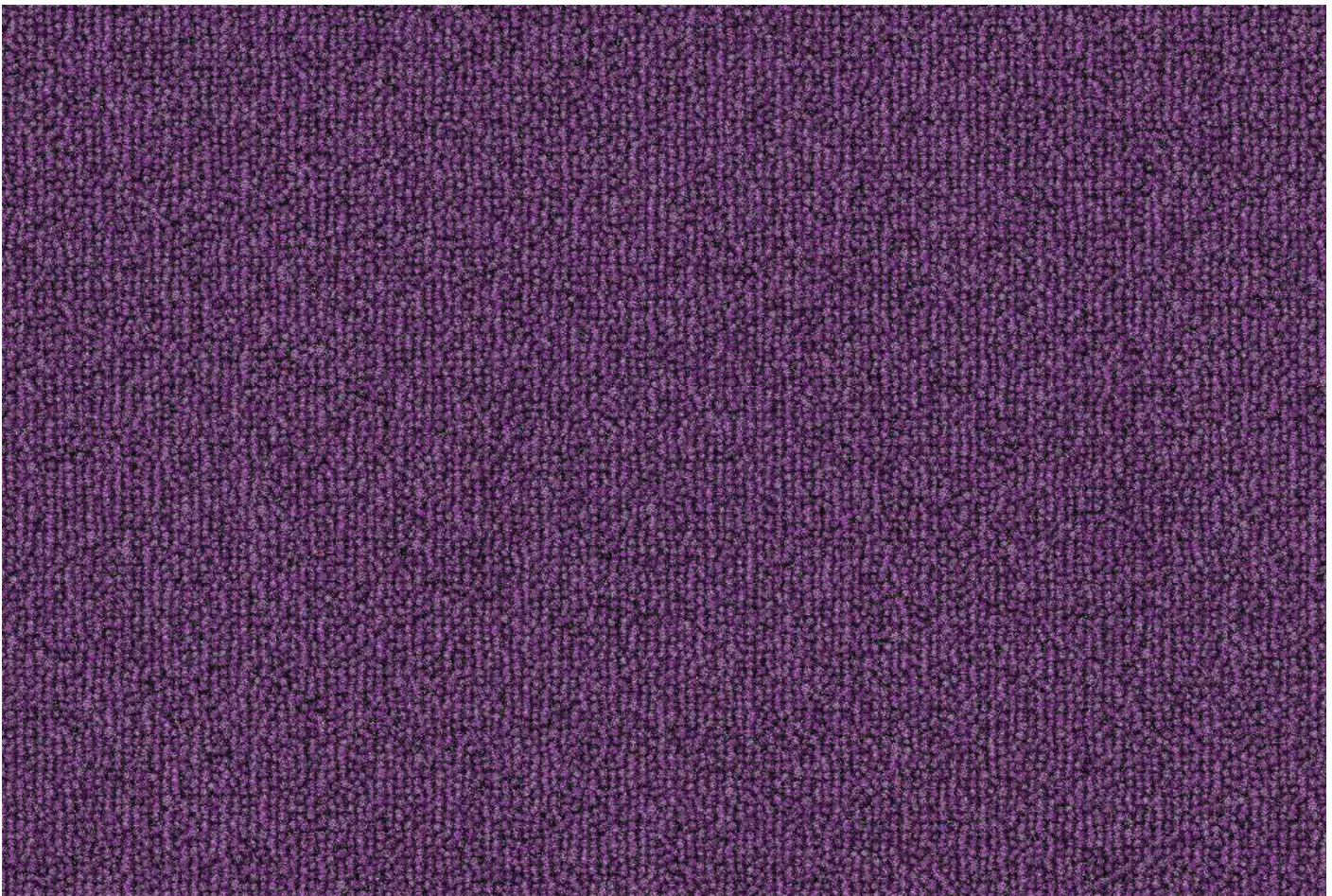
Fawn Beige CT242



Charcoal CT53 & Black CT45



Bluish Grey CT944



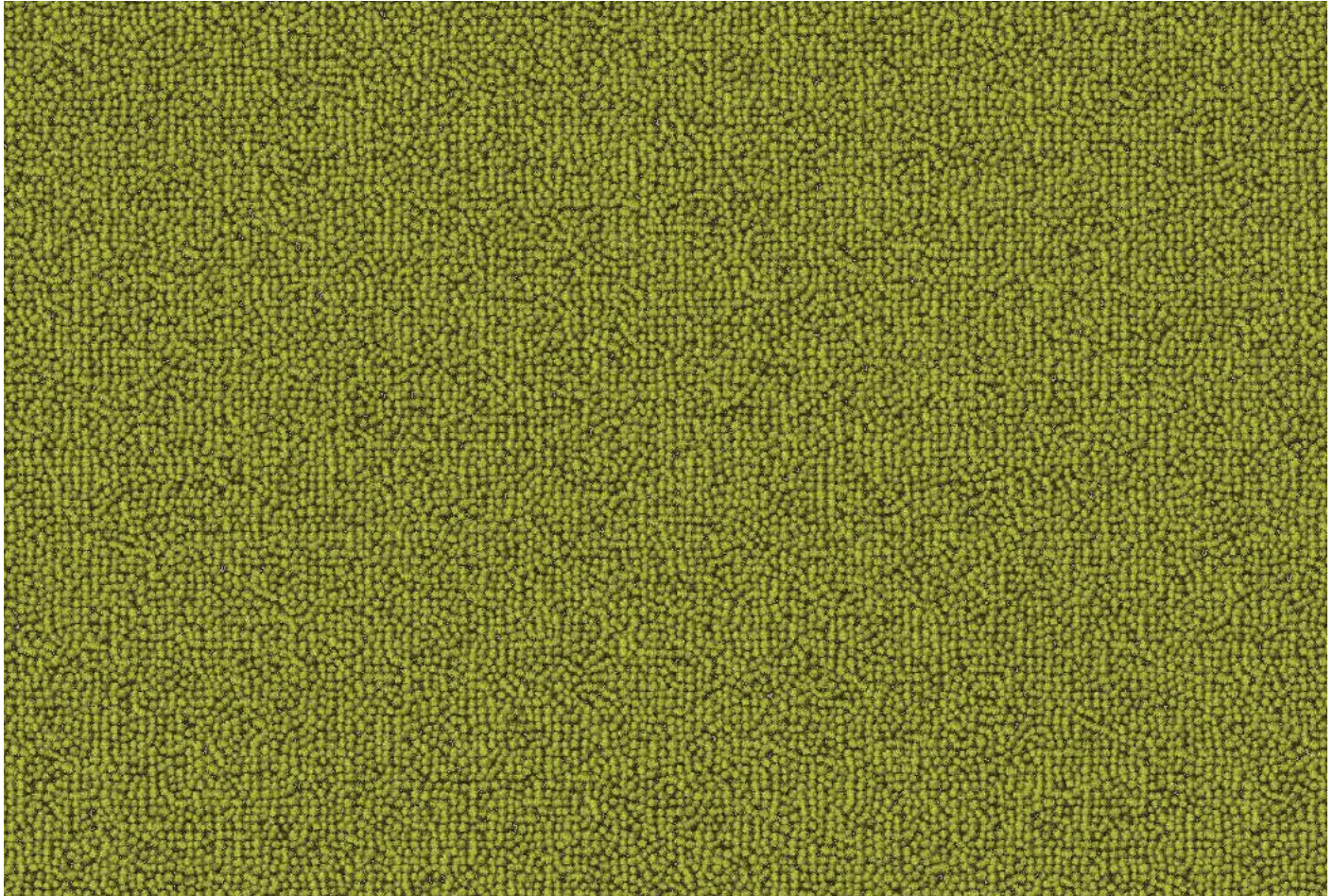
Berry Purple CT354



Dark Grey CT235 & Berry Purple CT354



Bluish Grey CT944



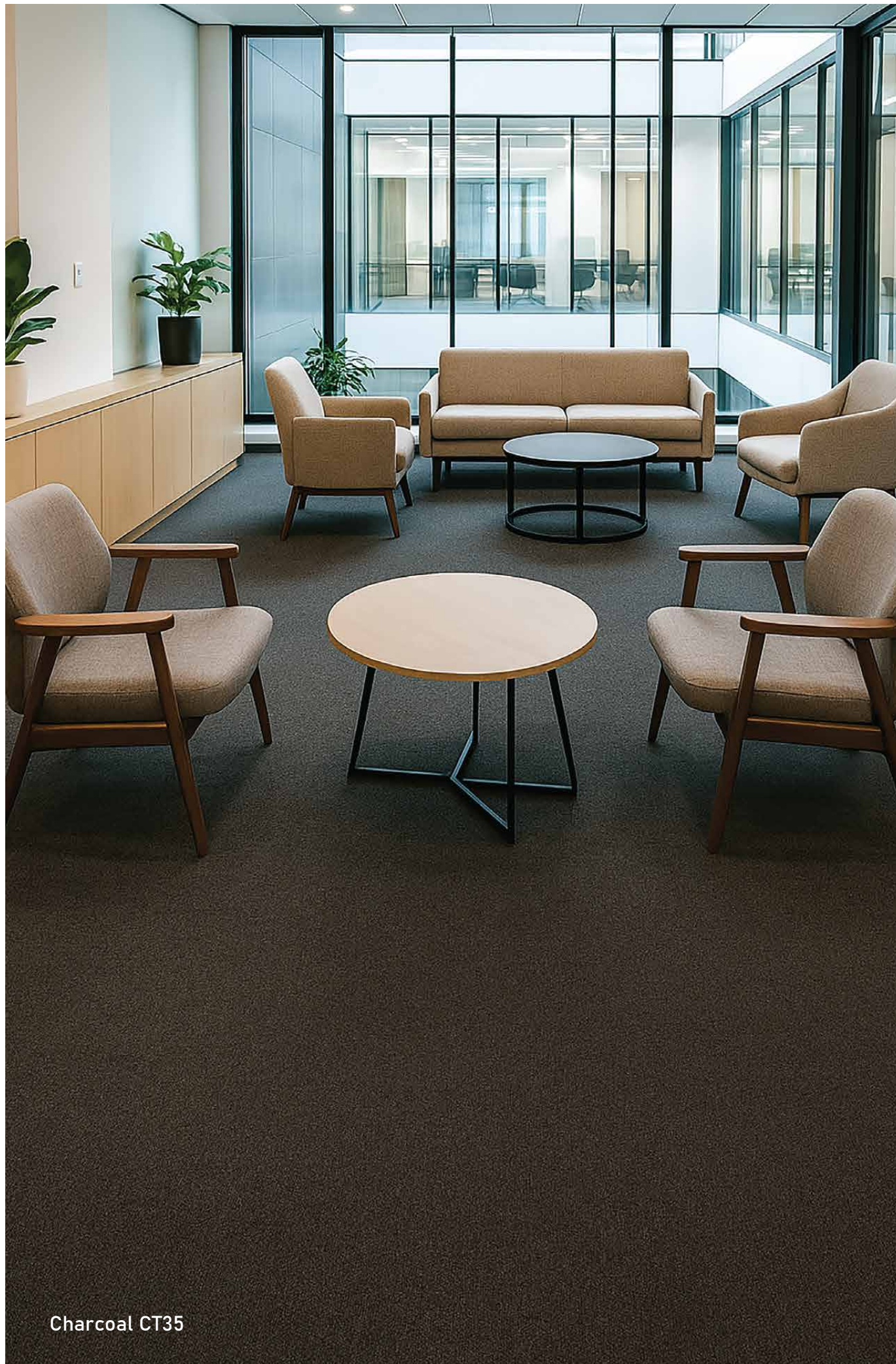
Sap Green CT154



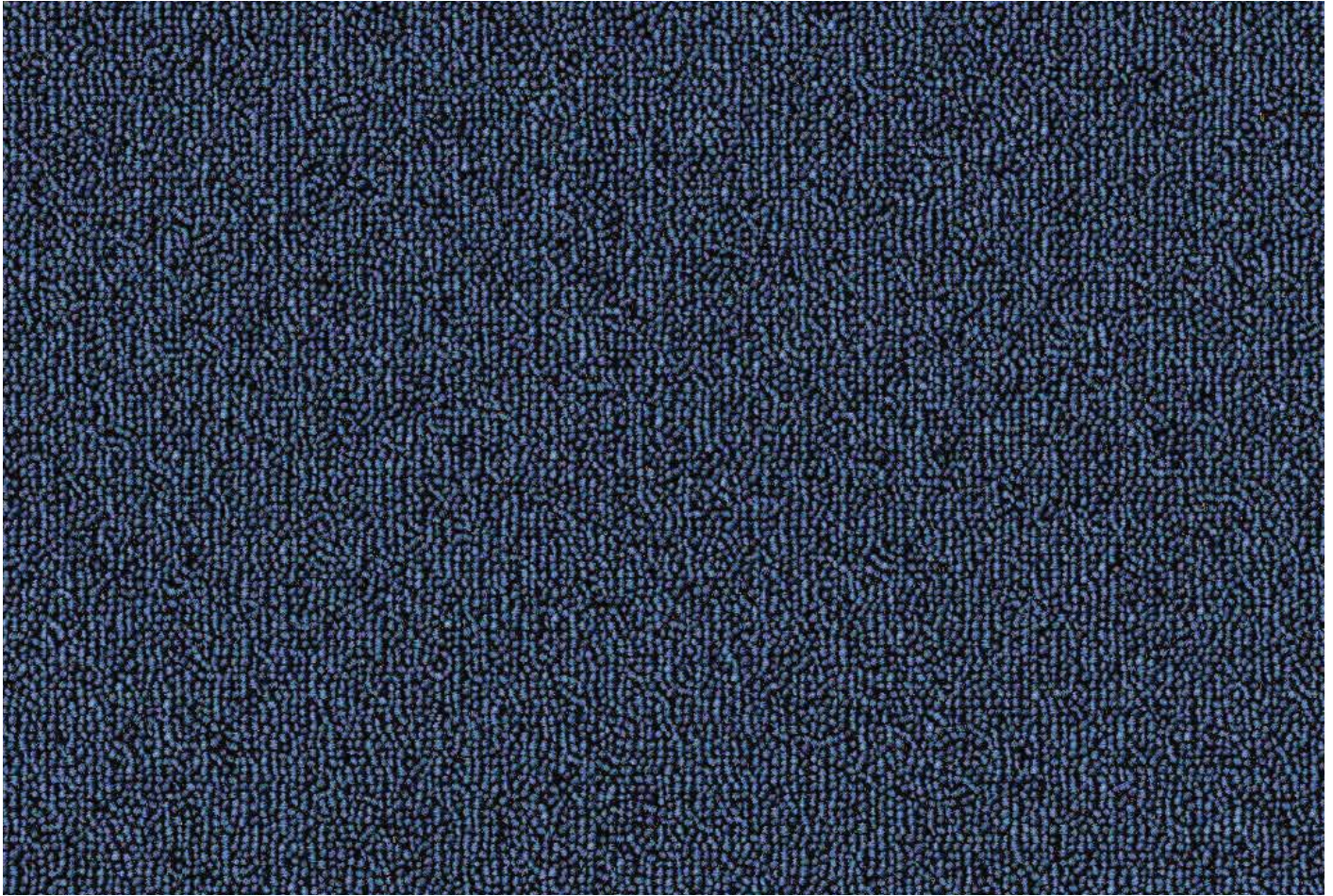
Ash Grey CT254



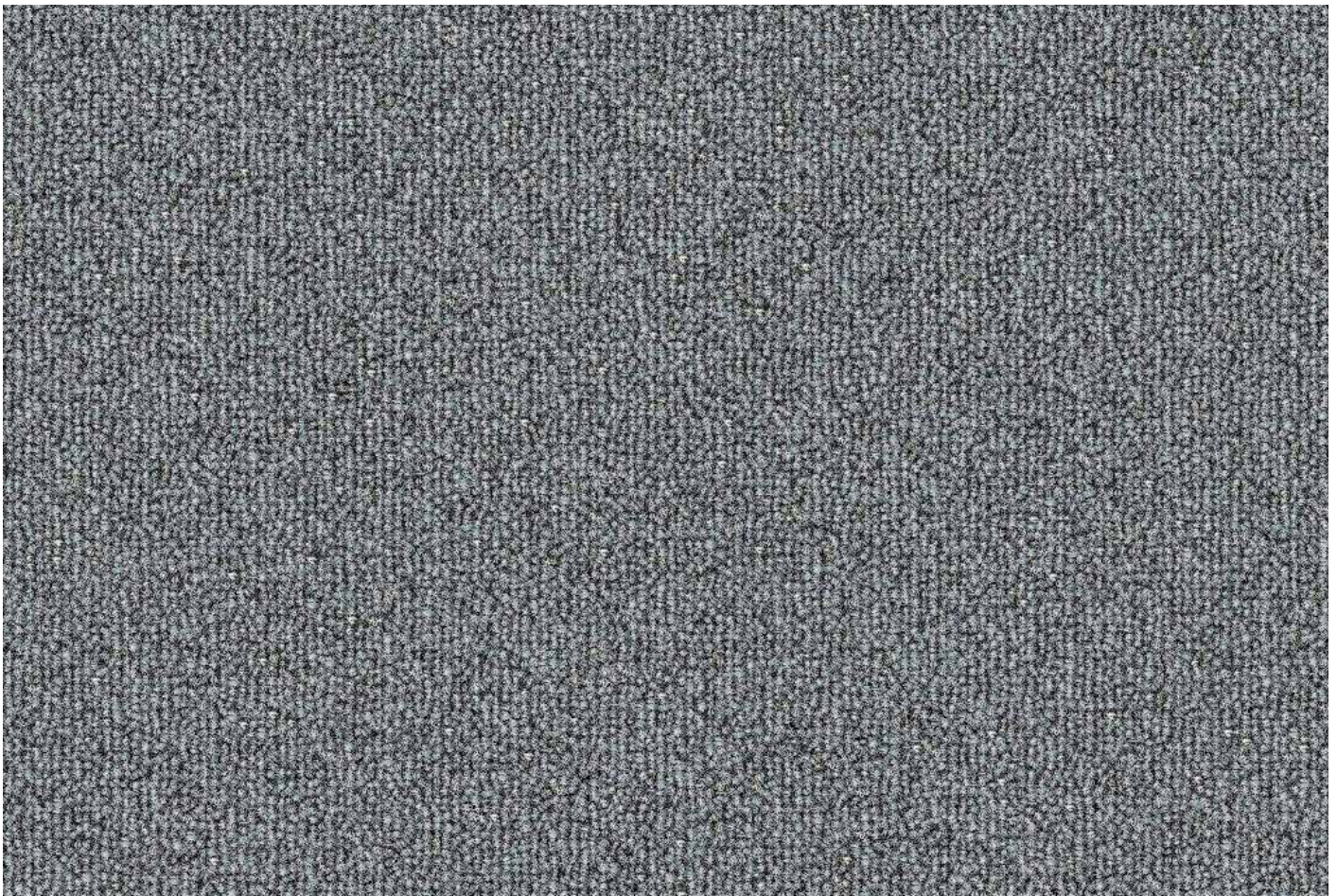
Sap Green CT154 & Charcoal CT35



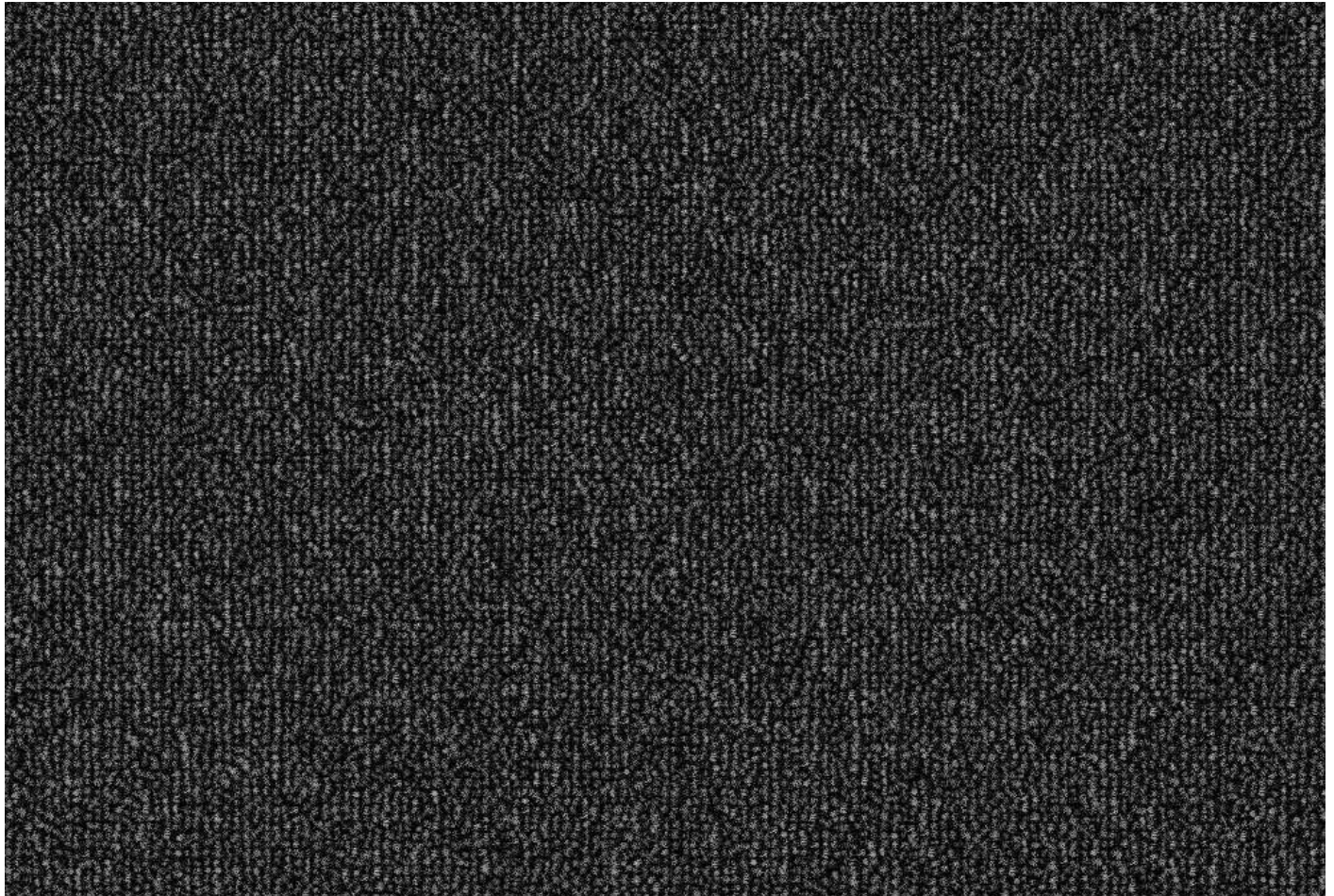
Charcoal CT35



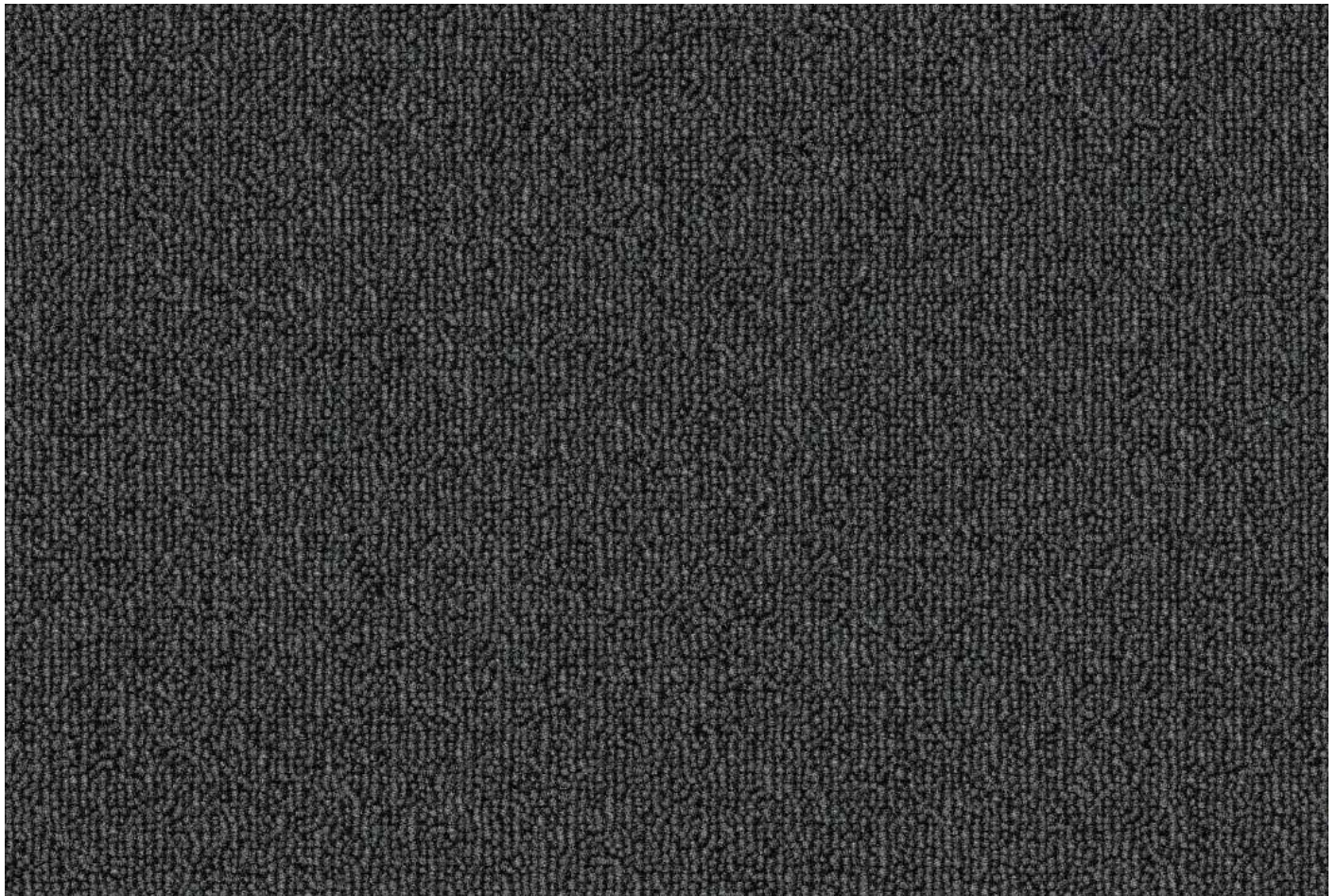
Ultra Blue CT93



Lt. Grey CT05



Charcoal CT35



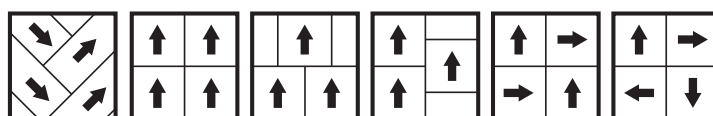
Dark Grey CT532



Ultra Blue CT93

## TECHNICAL SPECIFICATION

Construction		Tufted 1/10" gauge loop
Pile fibre composition		100% solution dyed PP
Backing		PVC
Total weight		± 3725 g/m <sup>2</sup>
Pile weight		± 500 g/m <sup>2</sup>
Pile Height		± 4 mm
Total Pile Height		± 7 mm
Number of stitches		55 / 10cm
Wear classification	EN 1307	33 / LC2
Castor chair suitability	EN 985	A: intensive use
Fire classification	EN 13501-1	Bfl-s1
Dimensional stability	EN 986	≤ 0,2%
Colour fastness to light	EN ISO 105-B02	≥ 7
Rubbing fastness	EN ISO 105-X12	≥ 4
Colour fastness to water	EN ISO 105-E01	≥ 4
Thermal resistance	ISO 8302	0,0687 m <sup>2</sup> .K/W
Sound absorption		0,15 aw
	EN ISO 354	Hz 125 250 500 1000 2000 4000 as -0,03 0,07 0,06 0,18 0,37 0,44
Impact sound reduction	EN ISO 10140-3	ΔLw = 27 dB
Permanent antistatic	ISO 6356	≤ 2 kV
Size & Packaging		50 x 50 cm 5 m <sup>2</sup> /box - 24 boxes/pallet



\* Joints are subject to be visible

\*\* Colour variation may occur between production batches.

